



Ductile Cast Iron Valves





YFL Industrial Supply Corp., Ltd. is a leading engineering company supplies complete industrial valves solutions to control the water, oil, gas, steam, slurry and powder in industries of water supply & drainage, hydro & thermal power station, petroleum extraction & refinery, oil & gas long distance pipeline delivery, city gas & district heating pipeline system, petrochemical & coal chemical, paper & pulp, metallurgy and mining etc.

YFL has an energetic working team with responsible technical sales engineers experienced in different industries to advise the correct types of industrial valves in suitable materials like ductile cast iron, forged steel, cast steel, stainless steel, nonferrous metal and alloy, plastic and ceramic to meet various working conditions with high pressure, high temperature, cryogenic, corrosive or abrasive service in different applications.

YFL is always ready to help customers find hard-to-find items, meet special requirements and solve urgent problems. Our mission is to supply complete solutions and create added value for our customers with top class quality, short delivery time and fast response service.

YFL ductile cast iron valves mainly include resilient seated gate valve, metal seated gate valve, globe valve, check valve, ball valve, butterfly valve, Y type strainer, air valve, foot valve, pressure relief valve, balancing valve, service valve, flap valve, fire hydrant and signal valve etc. They are widely used in municipal water supply & drainage, city gas pipeline system, building, fire fighting and marine etc.

Product quality is the basis of enterprise.

First class equipments and professional technicians produce top class products.

YFL Ductile cast iron valves are produced according to international standards of ISO, ANSI, AWWA, BS, DIN, EN, JIS and GOST as request.



Product quality is the life of enterprise.

YFL keeps focus on product quality from casting to painting and packing.

PMI test, mechanical performance test, thickness test, magnetic particle test, ultrasonic test, penetration test, low emission test and pressure test are strictly carried out under quality control system certified by ISO, API, CE, WRAS, ABS, SIRIM, UL, FM, SGS, DNV, TUV, LR, BV to ensure every YFL valve leave factory with top class quality.





Gate Valve Page 01-07



Check Valve Page 08-09



Globe Valve Page 10-10



Butterfly Valve Page 11-12



Ball Valve Page 13-13



Other Valves Page 14-22

Resilient Seated Gate Valves



Design: AWWA C509/AWWA C515
Type: NRS, Flange end, with pad for actuator
Face to face: ANSI B16.10
Class: 125PSI, 250PSI
Size: 1 1/2"–32"

Resilient Seated Gate Valves

Design: AWWA C509/AWWA C515
Type: NRS, Groove end
Class: 125PSI 250PSI
Size: 1 1/2"–8"



Resilient Seated Gate Valves



Design: AWWA C509/AWWA C515
Type: NRS, Mechanical Joint end
MJ end: ANSI/AWWA C111/A21.11
Size: 1 1/2"–24"

Design: AWWA C509/AWWA C515
Type: NRS, push-on end
Class: 125PSI 250PSI
Size: 1 1/2"–12"



Resilient Seated Gate Valves



Design: AWWA C509/AWWA C515

Type: OS&Y, Flange end

Size: 11/2"–24"

Resilient Seated Gate Valves

Design: BS5163 Type A EN1074 EN558–1

Type: NRS, Flange end

Class: PN25

Face to face: EN558–1 series 4

Size: DN50–DN300



Resilient Seated Gate Valves



Design: BS5163 Type A EN1171 EN1074 EN558–1

Type: NRS, Flange end

Face to face: EN558–1 Series3

Class: PN6, PN10, PN16

Size: DN40–DN800

Resilient Seated Gate Valves

Design: BS5163 Type B EN1074

Type: NRS, Flange end

Class: PN16

Face to face: EN558–1 series 3

Size: DN50–DN600



Resilient Seated Gate Valves



Design:	BS5163 Type A EN1171 EN1074 EN558-1
Type:	OS&Y, Flange end
Class:	PN6, PN10, PN16
Face to face:	EN558-1 series 3
Size:	DN40-DN600

Resilient Seated Gate Valves



Design:	DIN3352-F4 EN1171 EN558-1
Type:	NRS, Flange end
Class:	PN6, PN10, PN16, PN25
Face to Face:	EN558-1 series 14
Size:	DN40-DN800

Resilient Seated Gate Valves

Design:	DIN3352-F4 EN1171 EN558-1
Type:	NRS, Flange end, For gear box operated
Class:	PN6, PN10, PN16, PN25
Size:	DN450-DN800



Design:	DIN3352-F5 EN1171 EN558-1
Type:	NRS, Flange end
Class:	PN6, PN10, PN16, PN25
Face to face:	EN558-1 series 15
Size:	DN40-DN800



Resilient Seated Gate Valves



Design: DIN3352 F4/F5 EN1171 EN558-1

Type: OS&Y, Flange end

Class: PN6, PN10, PN16

Size: DN40-DN600

Resilient Seated Gate Valves

Design: SABS 664/665

Type: NRS, Flange end

Class: PN10, PN16

Size: DN40-DN600



Resilient Seated Gate Valves



Design: BS5163, Type A DIN3352 F4/F5 EN1171

Type: NRS, Flange end

Class: PN10, PN16

Size: DN50-DN200

Resilient Seated Gate Valves

Design: KSB 2334(Korean standard)

Type: NRS, Flange end

Class: 5K, 10K, 16K

Face to face: KSB 2334

Size: DN50-DN400



Resilient Seated Gate Valves



Design: TAIWAN STANDARD

Type: NRS, Flange end

Class: 7.5K, 10K

Size: DN50–DN600

Resilient Seated Gate Valves

Design: EN1171 EN558–1 ISO2531

Type: NRS, socket end For DUCTILE IRON PIPE

Class: PN10, PN16

Size: DN50–DN300



Resilient Seated Gate Valves



Design: EN1171 EN558–1 SABS669

Type: NRS socket end For PVC

Class: PN10, PN16

Size: DN50–DN315

Design: EN1171 EN558–1 ISO2531

Type: NRS, spigot end

Class: PN10, PN16

Spigot end: For PVC, PE, Ductile iron pipe

Size: DN50–DN315



Metallic Seated Gate Valves



Design: MSS SP-70/AWWA C500

Type: NRS, OS&Y, Flange end

Class: 125PSI, 150PSI

Size: 11/2"-24"

Metallic Seated Gate Valves

Design: BS5163 Type B EN1074 EN558-1

Type: NRS, Flange end

Class: PN6, PN10, PN16

Size: DN50-DN300



Metallic Seated Gate Valves



Design: BS5163 Type A BS5150 EN1171 EN558-1

Type: NRS, Flange end

Class: PN6, PN10, PN16

Face to face: EN558-1 series 3

Size: DN40-DN600

Metallic Seated Gate Valves

Design: BS3464

Type: NRS, Flange end

Size: DN40-DN300



Metallic Seated Gate Valves



Design: DIN3352 F4 EN1171 EN558-1

Type: NRS, Flange end

Class: PN6, PN10, PN16

Size: DN40-DN400

Metallic Seated Gate Valves

Design: DIN3352 F5 EN1171 EN558-1

Type: NRS, Flange end

Class: PN6, PN10, PN16

Size: DN40-DN400



Metallic Seated Gate Valves



Design: DIN3352 F4/F5 EN1171 EN558-1

Type: OS&Y, Flange end

Class: PN6, PN10, PN16

Size: DN40-DN400

Design: SABS664/SABS665

Type: NRS, Flange end

Class: PN10, PN16

Size: DN40-DN600



Check Valves



Design: AWWA C508, MSS SP-71, BS5153,
DIN3202 F6, EN1074-3

Type: Flexible swing type, Flange end

Class: 125PSI, 150PSI, PN6, PN10, PN16

Size: 11/2"(DN40)–24"(DN600)

Check Valves



Design: AWWA C508, MSS SP-71, EN1074-3

Type: Dual Plated type, wafer end

Class: 125PSI, 150PSI, PN6, PN10, PN16

Face to face: EN558-1 series 16

Size: 11/2"(DN40)–24"(DN600)

Check Valves

Design: BS5153, DIN3202 F6, EN1074-3

Type: Ball type, Flange end

Class: PN6, PN10, PN16

Size: DN40–DN400



Check Valves

Design: EN1074-3

Type: Ball type, thread end

Size: 1/2"(DN15)–4"(DN100)



Check Valves

With weight lever/Lift type/Vertical type

Check Valves



Design:	AWWA C508, MSS SP-71, BS5153
Type:	Swing type, Flange end with weight lever
Class:	125PSI, 150PSI, PN6, PN10, PN16
Size:	11/2"(DN40)–24"(DN600)

Check Valves

Design:	DIN3202 F1, EN1074–3
Type:	Lift type, Flange end
Class:	PN6, PN10, PN16
Face to face:	EN558–1 series 1
Size:	DN15–DN300



Check Valves



Design:	DIN3202 F6 EN1074–3 EN558–1
Type:	Swing type, Flange end with weight lever
Class:	PN6, PN10, PN16
Size:	DN40–DN600

YFL
www.special-valve.com

Check Valves

Design:	EN1074–3
Type:	Vertical type, Flange end
Class:	PN6, PN10, PN16
Size:	DN50–DN300



Globe Valves



Design: MSS-SP-85
Type: Straight type, Flange end
Class: 125PSI, 150PSI
Size: 11/2" – 12"

Globe Valves

Design: BS5152
Type: Angle type, Flange end
Class: PN10, PN16
Size: 11/2" – 8"



Globe Valves



Design: BS5152
Type: Straight type, Flange end
Class: PN10, PN16
Size: DN40–DN300

Globe Valves

Design: DIN3202 F1 DIN3356 EN13789
Type: Straight type, Flange end
Class: PN10, PN16
Face to Face: EN558–1 series 1
Size: DN15–DN300



Butterfly Valves



Design:	MSS SP-67, BS5155, EN593
Type:	Wafer type, gear box operated
Class:	125PSI, 150PSI, PN10, PN16
Size:	11/2"(DN40)–48"(DN1200)

Butterfly Valves



Design:	MSS SP-67, BS5155, EN593
Type:	Industrial, lever operated
Size:	11/2"(DN40)–12"(DN300)

Butterfly Valves

Design:	MSS SP-67, BS5155, EN593
Type:	Lug type, lever operated
Size:	11/2"(DN40)–24"(DN600)



Butterfly Valves

Design:	MSS-SP-67 BS5155 EN593 EN1074
Type:	Lug type, gear operated
Class:	PN10, PN16
Size:	2"(DN50)–24"(DN600)



Butterfly Valves



Design: BS5155 EN593 EN1074
Type: U section type Body, lever operated
Class: PN10, PN16
Size: DN50–DN300

Butterfly Valves

Design: BS5155, EN593
Type: Double flange, lever operated
Class: PN10, PN16
Size: DN50–DN300



Butterfly Valves



Design: BS5155, EN593
Type: Double flange, gear box operated
Class: PN10, PN16
Face to face: EN558–1 series 13
Size: DN50–DN1200

Butterfly Valves

Design: BS5155, EN593
Type: Double eccentric, flange end gear box operated
Class: PN10, PN16, PN25
Size: DN50–DN1200



Ball Valves



Design: API 6D

Type: Full bore, Flange end

Face to Face: ANSI B16.10

Size: 1/2"-12"

Ball Valves

Design: DIN3357

Type: Reduce bore, Flange end

Size: DN15-DN300



Ball Valves



Design: DIN3357

Type: Full bore, Flange end

Face to Face: EN558-1 series 14/15

Size: DN15-DN300

Ball Valves

Design: JIS 7S-48

Type: Full bore, Flange end

Size: DN15-DN300



Strainer



Design: EN1074
Type: Y type, Thread end
Size: 1/2"(DN15)–6"(DN150)

Strainer

Design: EN1074, MSS-SP
Type: Y type, Flange end, light duty
Size: 1/2"(DN15)–12"(DN300)



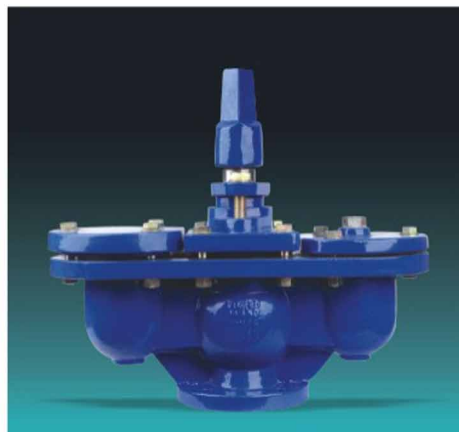
Strainer



Design: DIN3202F1, EN1074, BS2080
Type: Y type, Flange end, heavy duty
Size: 1/2"(DN15)–24"(DN600)

Air Valves

Design: EN1074–4
Type: Flange end with inner isolation valve
Size: DN50–DN200



Air Valves



Design: EN1074-4

Type: Flange end with inner isolation valve

Size: DN50-DN200

Air Valves

Design: EN1074-4

Type: Flange end, Single Orifice Combined-type

Size: DN50-DN200



Air Valves



Design: EN1074-4

Type: Flange end, Double Orifices Automatic type

Size: DN50-DN200

Air Valves

Design: EN1074-4

Type: Flange end, Single Orifice Automatic type

Size: DN50-DN150



Air Valves



Design: EN1074-4
Type: Flange end,
Single Orifice Superposition Automatic type
Size: DN50-DN100

Air Valves



Design: EN1074-4
Type: Thread end, Single Orifice Automatic type
Size: 1/2" - 2"

Air Valves

Design: EN1074-4
Type: Thread end, Single Orifice Automatic type
Size: 1/2" - 2"



Foot Valves

Design: EN1074-5
Type: Flange end
Size: 2"(DN50) - 12"(DN300)



Service Valves



Design: EN1074-5
Type: Angle pattern, thread end
Size: 1/2" - 2"

Flap Valves

Design: EN1074-5
Type: Flange end
Size: 2"(DN50) - 12"(DN300)



Service Valves



Design: EN1074-5
Type: Straight pattern, thread end
Size: 1/2" - 2"

Fire Hydrant

Design: BS750
Class: PN10, PN16
Size: DN65-DN80



Fire Hydrant



Design: BS750

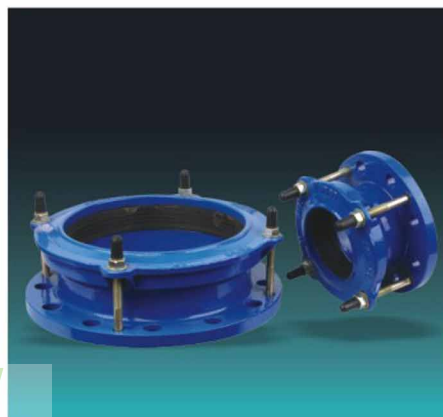
Size: DN80–DN150

Flange Adaptor

Type: Use for pipe: AC, PVC, PE, DI, steel pipe

Class: PN10, PN16

Size: DN40–DN1200



signal Indicator valve



Design: AWWA C509/C515

Type: Flange end, with the indicator

Size: DN50–DN300

Flange Adaptor

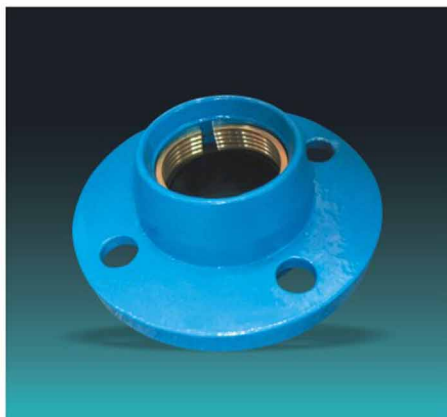
Type: Use for PVC pipe

Class: PN10, PN16

Size: DN40–DN300



Flange Adaptor



Type: Use for PE pipe

Class: PN10, PN16

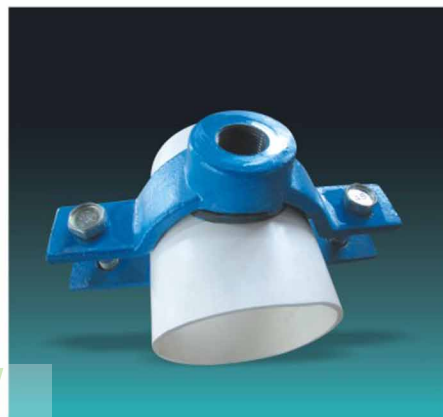
Size: DN40–DN300

Saddle

Class: 125PSI, PN6, PN10, PN16, PN25

Use for pipe: AC, Ductile iron, Steel pipe

Size: DN50–DN300



Coupling



Type: Use for pipe: AC, PVC, PE, DI, steel pipe

Class: PN10, PN16, PN25

Size: DN40–DN1200

Saddle

Type: Use for pipe: AC, PVC, PE, DI, steel pipe

Class: PN6, PN10, PN16, PN25

Size: DN50–DN315



Expansion Joint



Type:	Single sphere
Class:	125PSI, PN6, PN10, PN16, PN25
Size:	DN25–DN600

Expansion Joint

Type:	Twin union sphere
Class:	125PSI, PN6, PN10, PN16, PN25
Size:	3/4"(DN20)–6"(DN150)



Expansion Joint



Type:	Double sphere
Class:	125PSI, PN6, PN10, PN16, PN25
Size:	DN25–DN600

Dismantling Joint

Type:	Use for pipe: AC, PVC, PE, DI, steel pipe
Class:	PN6, PN10, PN16, PN25
Size:	DN40–DN1200



EN545/EN598 Ductile iron pipe fittings



Ductile Iron Pipe Fittings For PVC Pipe







Tel: 0086-592-5029670

Fax: 0086-592-5029673

Email: sales@special-valve.com

Website: www.special-valve.com

Address: No.22, Guanri Road, Xiamen, China

YFL Industrial Supply Corp., Ltd.